

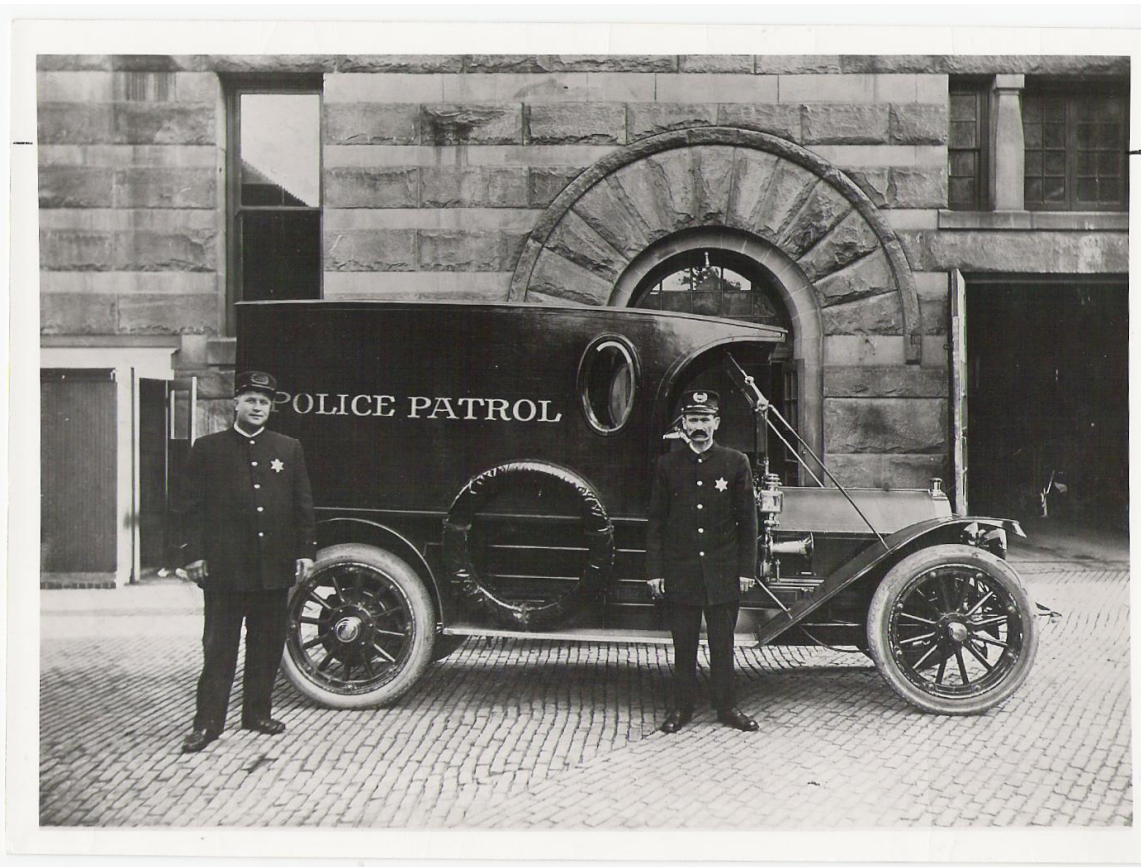
**FORT WAYNE POLICE  
DEPARTMENT**



**ANNUAL REPORT  
2012**

## MISSION STATEMENT

The Fort Wayne Police Department, in partnership with our community, will strive to protect the life, property, and personal liberties of all individuals. We believe that the overall quality of life for all residents will improve through the deterrence of criminal activity and an understanding of the diversity of cultures within this community. Furthermore, we recognize the need for fair and impartial enforcement of the law with attention given to the highest possible quality of service delivery to the community.



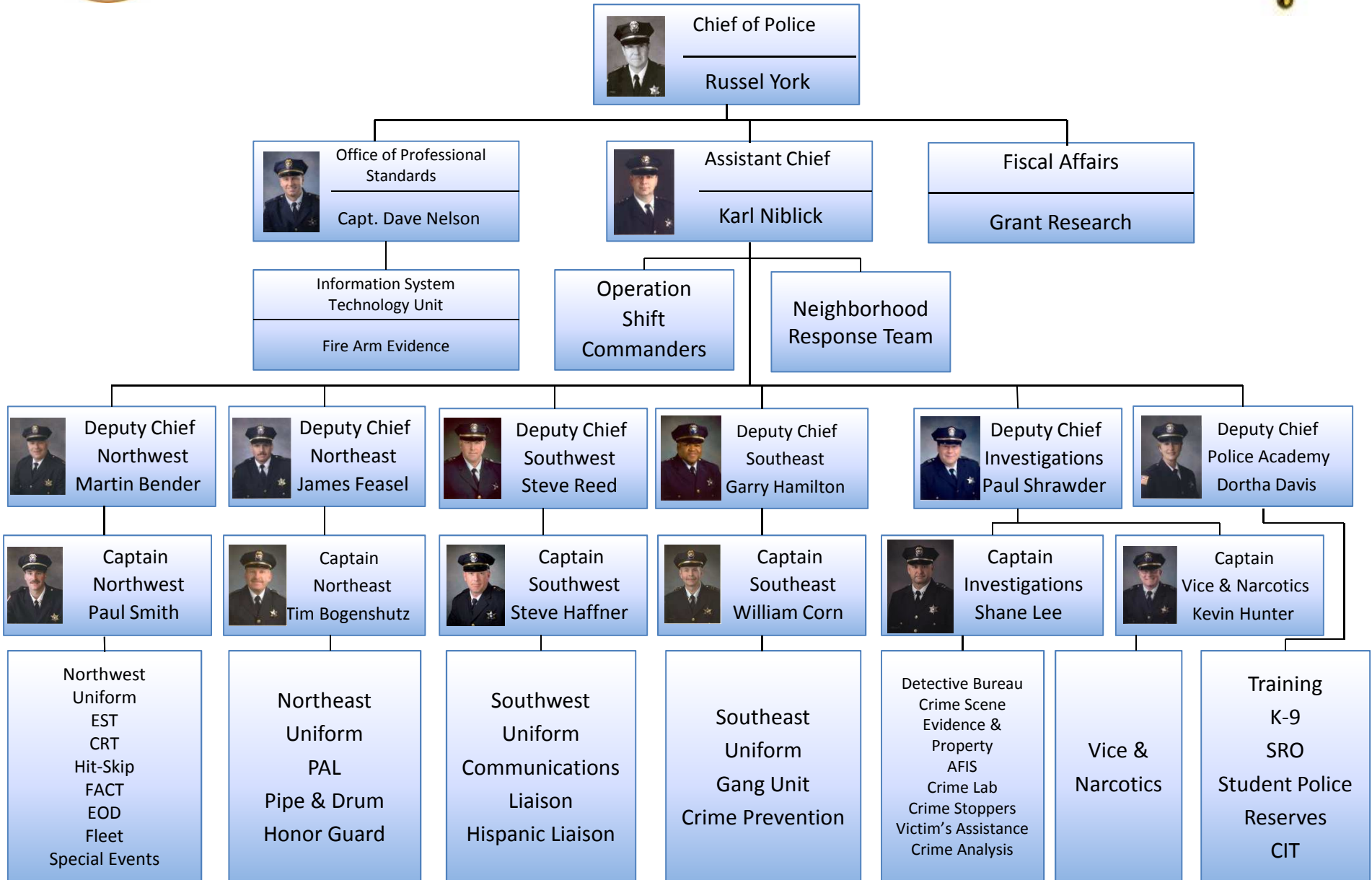
## TABLE OF CONTENTS

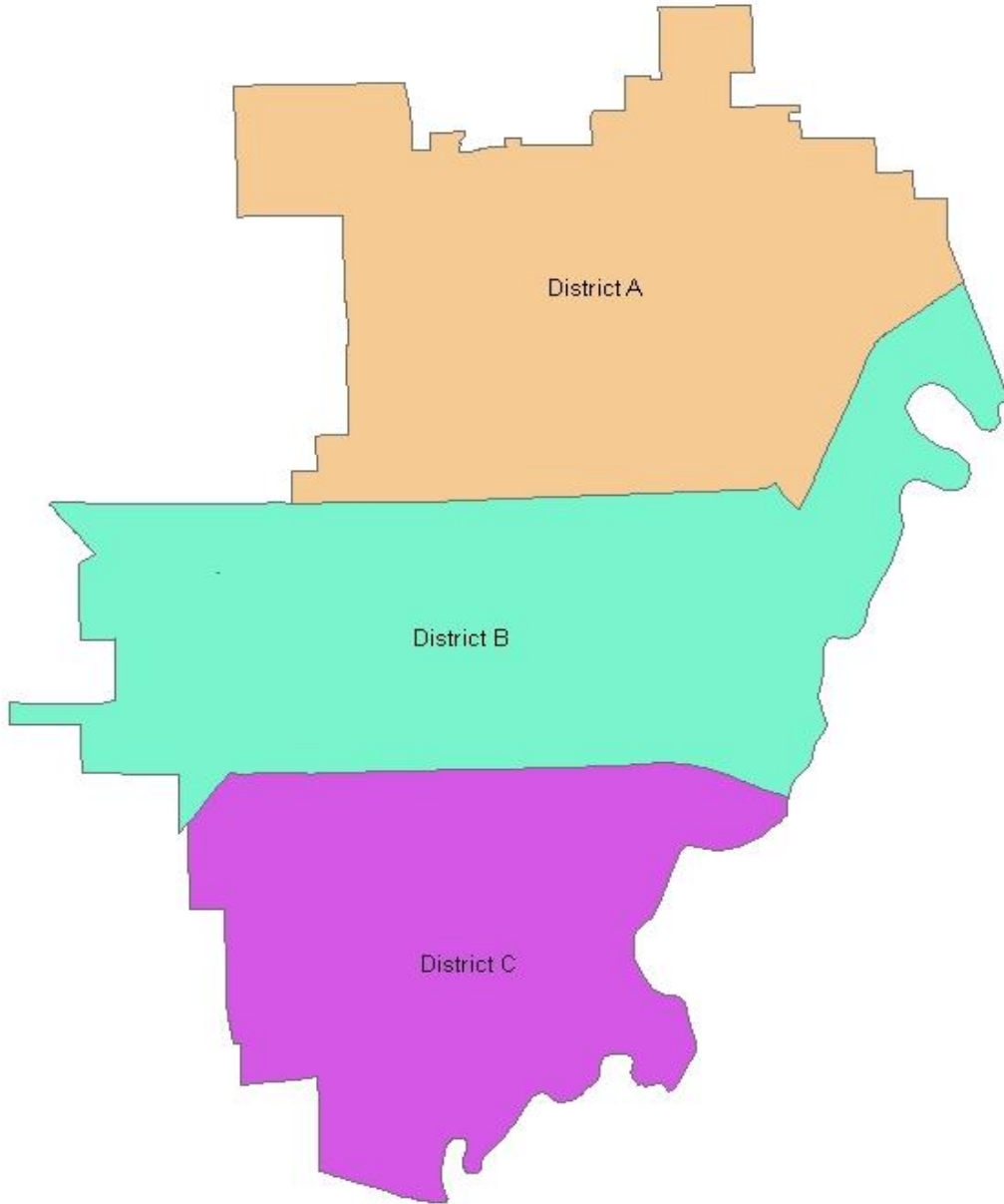
MISSION STATEMENT	2
TABLE OF CONTENTS	3
ORGANIZATIONAL CHART	5
QUADRANT/DISTRICT MAPS	6
INTRODUCTION	10
DEPARTMENT STATISTICS	11
<b>CHIEF'S COMPLEX</b>	12
POLICE TRAINING CENTER	12
CRISIS INTERVENTION TEAM	13
CANINE UNIT	14
OFFICE OF PROFESSIONAL STANDARDS	14
INTERNAL AFFAIRS	14
INFORMATION SYSTEMS & TECHNOLOGY UNIT	16
FIREARMS MANAGEMENT	17
NEIGHBORHOOD RESPONSE TEAM	17
<b>INVESTIGATIVE SUPPORT DIVISION</b>	19
INVESTIGATIVE DIVISION	20
HOMICIDE	20
ROBBERY	21
CRIMES AGAINST PERSONS	21
DOMESTIC VIOLENCE UNIT	22
STREET CRIMES UNIT	22
PROPERTY CRIMES	23
AUTO THEFT UNIT	23
PAWN/STOLEN	24
JUVENILE AID DIVISION	24
FINANCIAL CRIMES	24
DIGITAL CRIMES	24
B-SHIFT INVESTIGATIVE	25
C-SHIFT INVESTIGATIVE	25
CRIME STOPPERS	25
CRIME ANALYSIS UNIT	26
VICTIM ASSISTANCE PROGRAM	26
LABORATORY SERVICES	27
CRIME SCENE MANAGEMENT	28
PROPERTY & EVIDENCE	28
VICE & NARCOTICS BUREAU	29
DRUG HOUSE ORDINANCE PROGRAM	29
<b>NORTHWEST DIVISION</b>	30
TRAFFIC OVERVIEW	31
F.A.C.T. TEAM	31

HIT/SKIP	31
TRAFFIC SAFETY GRANTS	31
EMERGENCY SERVICES TEAM	33
CRISIS RESPONSE TEAM	34
HAZARDOUS DISPOSAL UNIT	34
<b>NORTHEAST DIVISION</b>	35
POLICE ATHLETIC LEAGUE	36
HONOR GUARD	36
PIPE & DRUM BRIGADE	36
<b>SOUTHWEST DIVISION</b>	37
HISPANIC/MULTICULTURAL LIAISON OFFICE	38
<b>SOUTHEAST DIVISION</b>	38
GANG UNIT	40
<b>RECORDS BUREAU</b>	40



# Fort Wayne Police Department

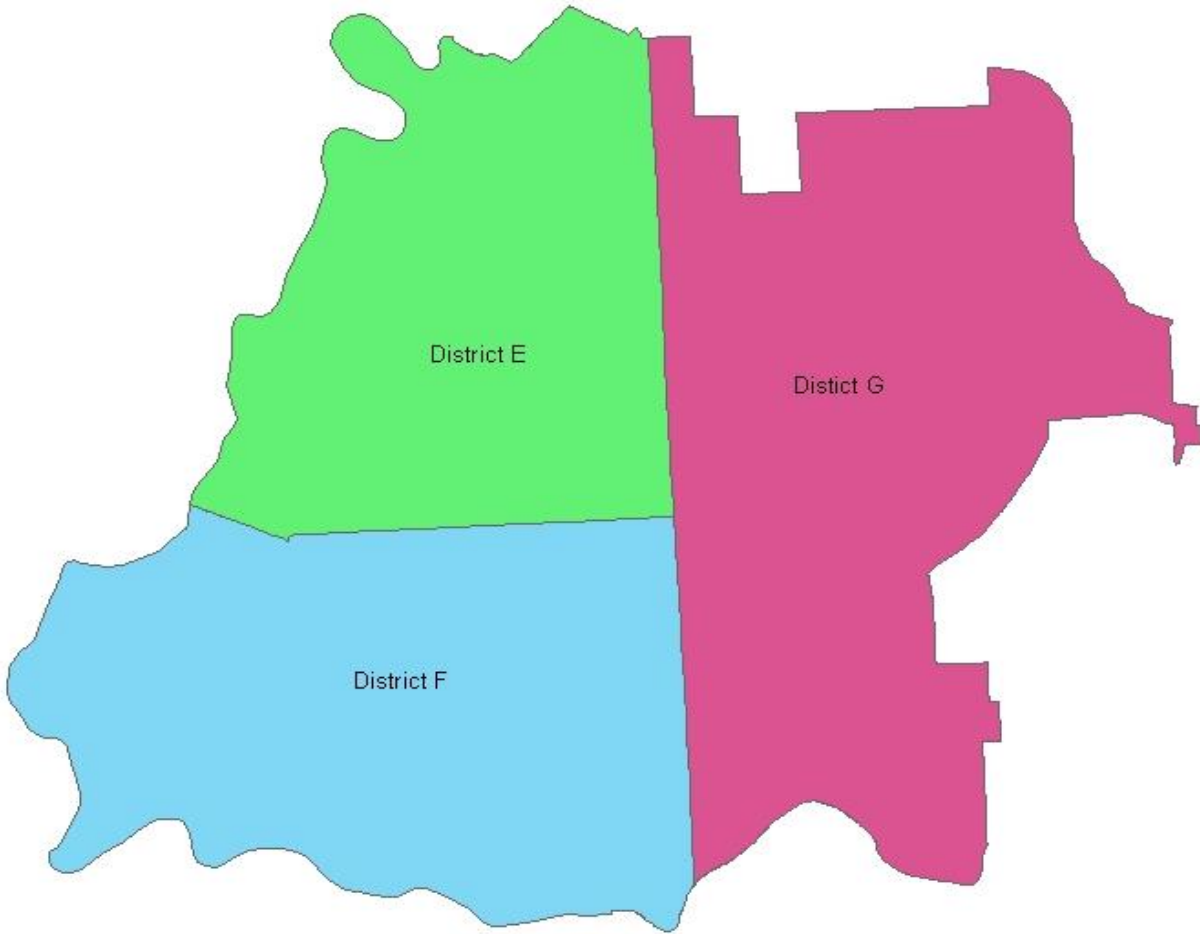





**Northwest Division**  
© 2007 Board of Commissioners, Clark County, Oregon  
 This is a service of the Board of Commissioners, Clark County, Oregon  
 Board of Commissioners, Clark County, Oregon  
 1000 NE Oregon Street, Suite 2000, Portland, Oregon 97232


 Scale: 1" = 6500' Feet

Printed: Mar 02, 2011. (Click for more information about this map.)

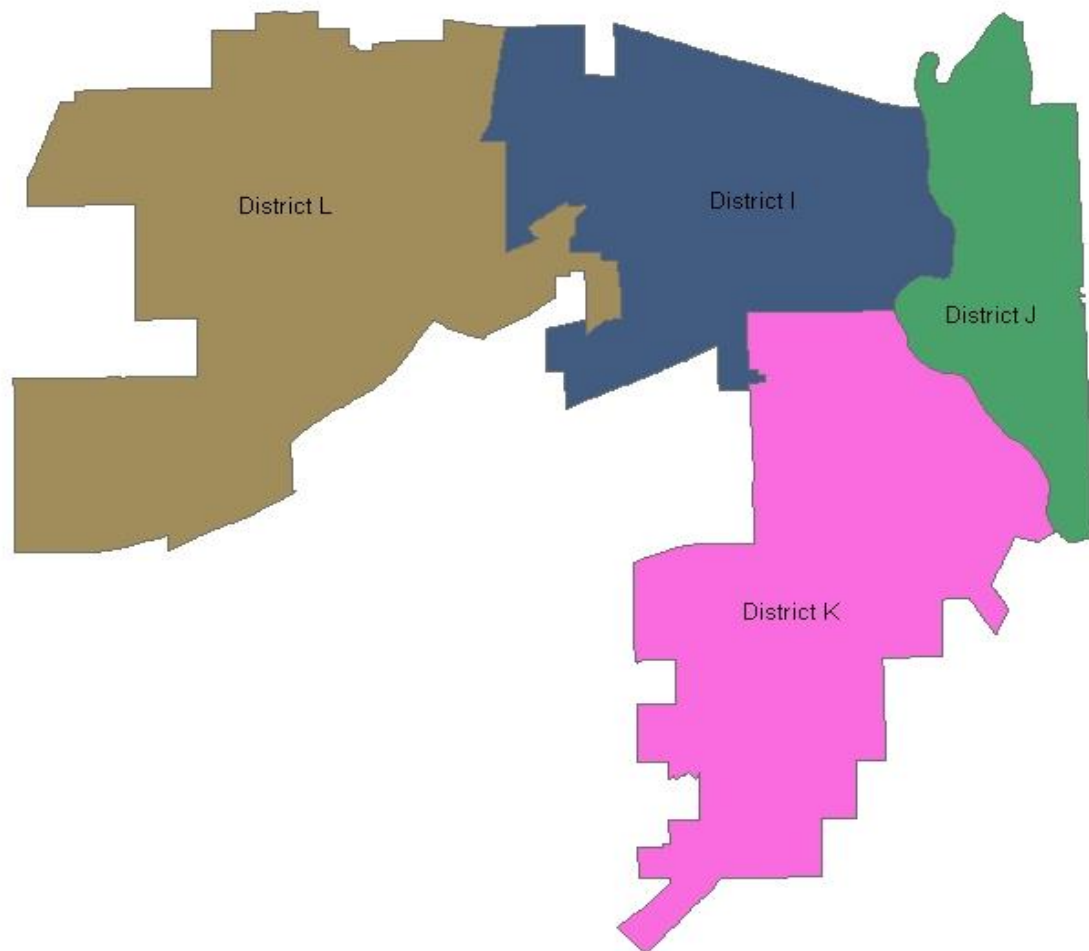



**Northeast Division**  
© 2011 Board of Commissioners, City of Cary, NC  
 This is a service of the City of Cary.  
 All rights reserved. Cary, NC 27513  
 www.carync.gov


 Scale: 1" = 500' Feet

Although this information is provided as a service to the public, it is not intended to constitute a contract or any other legal instrument. The City of Cary does not warrant or guarantee the accuracy of this information. The City of Cary is not responsible for any errors or omissions in this information. The City of Cary is not liable for any damages, including consequential damages, arising from the use of this information. Cary, NC 27513

Printed: Mar 02, 2011 (City Information Unit: Wires)



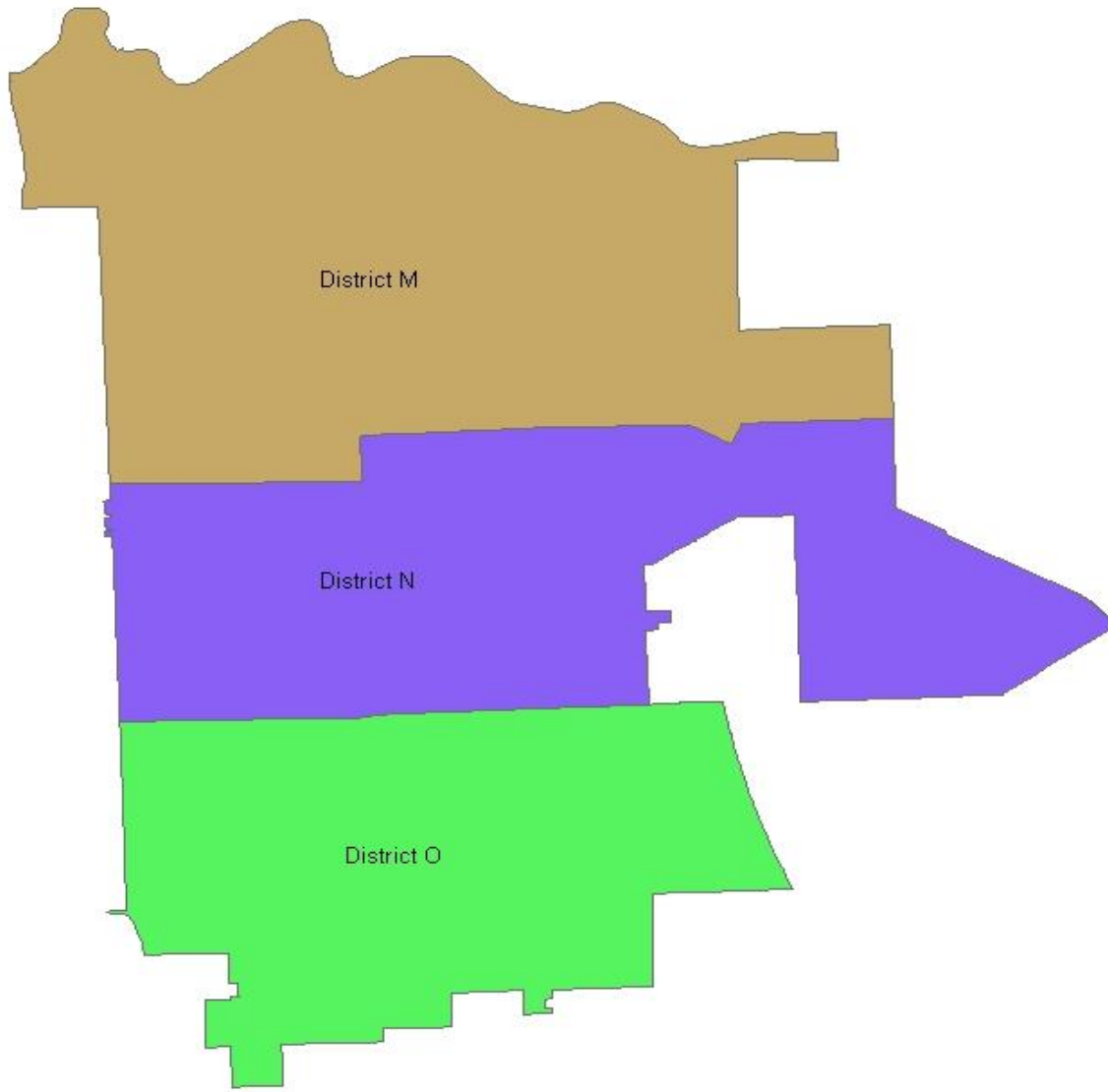

**Southwest Division**  
© 2010 Board of Commissioners of the County of Clark  
 Clark County, Nevada  
 1000 W. Flamingo Ave., Suite 1000  
 Las Vegas, NV 89102

Although this document contains information that may be useful to the recipient of this map, the County does not warrant or guarantee the accuracy of the information contained herein and will not be liable for any damages arising from any use of the information on this map.


 Scale: 1" = 7500' Feet

Printed: Mar 02, 2011 (Crimes Information Unit - Wards)





District M

District N

District O


**Southeast Division**  
© 2011 State of Connecticut. All Rights Reserved.  
 State of Connecticut, Department of Transportation  
 Planning and Information Systems  
 100 Water Street, 06103


 Scale: 1" = 5000'

Printed: Mar 02, 2011. (Cross Information Date: None)

**INTRODUCTION TO THE  
FORT WAYNE POLICE DEPARTMENT**

Starting in 1697 the French and British built a series of three forts at the confluence of the St. Joseph River, St. Mary's River, and Maumee River near the Miami Indian village of Kekionga. The last fort was built in 1794 and was named in honor of General "Mad" Anthony Wayne. Fort Wayne was platted in 1823 and experienced a rapid expansion after completion of the Wabash and Erie Canal. The proud tradition of the Fort Wayne Police Department began in 1829 with a single "Village Marshal." That tradition continues today with 435 sworn officers and 100 civilians led by Police Chief Russell P. York.



**Russell P. York  
Chief of Police**

Police Chief Russell "Rusty" P. York is currently in his 13<sup>th</sup> year as Chief of Police, serving the 250,000 citizens of Fort Wayne. Chief York is assisted by Assistant Chief Karl Niblick, Deputy Chief Martin Bender of the Northwest Quadrant, Deputy Chief James Feasel of the Northeast Quadrant, Deputy Chief Steve Reed of the Southwest Quadrant, Deputy Chief Garry Hamilton of the Southeast quadrant and Deputy Chief Paul Shrawder of the Investigative Support Division.

**CALLS FOR SERVICE**

	<b>2011</b>			<b>2012</b>
NW DIVISION	51,758		NW DIVISION	50,362
NE DIVISION	33,536		NE DIVISION	34,771
SW DIVISION	46,949		SW DIVISION	44,398
SE DIVISION	65,803		SE DIVISION	62,136
NO DIVISION	2,532		NO DIVISION	2,248
NARCOTICS	766		NARCOTICS	733
TOTAL	201,344		TOTAL	194,648

**TOP 10 CALLS FOR SERVICE**

TRAFFIC STOP	26,830
911 HANG UP	21,292
DOMESTIC DISTURBANCE	8,309
DISTURBANCE	8,155
AUDIBLE ALARM	7,839
TRAFFIC ACCIDENT	7,477
SUSPICIOUS	7,264
C.O.P.S	5,385
THEFT	5,110
EMS ASSIST	4,002

**POLICE BUDGET**

SWORN OFFICERS	435
WAGES & BENEFITS	\$42,020,616
SUPPLIES & MATERIALS	\$1,743,262
OTHER SERVICES (INS., MISC., TELEPHONES)	\$6,706,925
CAPITAL OUTLAYS (VEHICLES, FURNITURE, EQUIPMENT)	\$10,060
TOTAL	\$50,480,863

# CHIEF'S COMPLEX

The Chief's Complex consists of both civilian and sworn personnel who report directly to the Chief of Police and to the Assistant Chief. Many of these positions include administrative and technical support.



**Karl M. Niblick**  
**Assistant Chief**

The personnel assigned to the Chief's Complex include individuals working for the Office of Professional Standards/Internal Affairs, the Information Systems and Technology Unit, Fiscal Affairs, Payroll, the Fort Wayne Police Training Center, Grants and Research, the Neighborhood Response Team, and the Office of Public Information. These dedicated men and women work tirelessly to keep the department running from day to day, so that we may carry out our mission to serve the people of Fort Wayne.

## **POLICE TRAINING CENTER**

The primary mission of the Fort Wayne Police Training Center is to facilitate the hiring and training of new officers, give all active and reserve officers of the Fort Wayne Police Department the State-mandated minimum training hours, and facilitate training in specific topics. The secondary mission is to provide or host any secondary training that officers need or could benefit from, and maintain the training records for all sworn and reserve officers and provide this information to the Indiana Law Enforcement Training Board (LETB).

Applicants were recruited for the next class of officers. A record 1,152 applications were received.

A safety day for women was held with 160 participants. The course sold out and a waiting list was created with numerous requests for another class in 2013.

97% of the agency's approximately 435 sworn personnel met or exceeded the required 24 hours of training.

**PERFORMANCE INDICATORS**

Training hours	2009	2010	2011	2012
Full-time officers	32,172	40,474	43,113	30,103
Reserve officers	601	333	355	348
Total hours	32,772	40,805	43,468	30,450

**Crisis Intervention Team (CIT):** The Fort Wayne Police Department continues to have a highly lauded CIT Program within the State of Indiana. With approximately eighty (80) patrol officers spread throughout the city working three different shifts, people with mental illness who are experiencing a crisis are being well served. Again, as in past years, the number of calls responded to increased.

The below performance indicators reflect an extremely low arrest rate, and very good judgment as a whole in using physical force, chemical agent, or a conducted energy device on the person in crisis.

	2012	2011	2010	2009	2008
Calls Responded to by CIT	1313	1234	1059	989	926
Immediate 24-Hour Detentions	1290	1205	1011	907	807
Voluntary Admissions	9	9	19	35	59
Medical Admissions	1	0	0	0	3
Emergency 72-Hour Detentions	0	1	2	2	1
Consumers Stabilized at Scene	12	18	23	34	49
No Action Taken/Required	0	1	3	5	4
Arrested	1	0	1	5	3
Suicide Related Calls	942	892	763	674	611
Party Armed	119	78	95	60	76
Currently Using Drugs/Alcohol	389	329	247	245	230

**Canine Unit:** The K9 unit continued to provide service to the Department fulfilling our commitment to the Operations Division and Narcotics Division. We continued to fulfill requests for K9 demonstrations and lectures. Instruction on K9 Policing was provided for the Fort Wayne Police Academy. Requests for the popular cooperative K9 School Drug Interdiction program between the Police Department and Fort Wayne Community Schools continued as well. A 5-day working seminar featuring an internationally recognized police K9 expert was sponsored by the Fort Wayne K9 Unit. Seventeen K9 teams participated, including all Fort Wayne PD units.

**Statistics:**

Incidents Utilizing Canines 595

Highest reported incident usage:

	<u>2012</u>	<u>2011</u>
Alarms:	198	264
Robbery	50	65
Narcotics	116	123
Burglary	48	51

Highest reported K9 utilizations:

	<u>2012</u>	<u>2011</u>
Drug Sniffs	100	125
Tracking	107	167
Building searches	45	72
K9 Apprehensions	52	50
Bomb Sniffs	0	1
K9 Bites	8	8

**OFFICE OF PROFESSIONAL STANDARDS**

**Internal Affairs:** The Office of Professional Standards, Internal Affairs Unit saw a reduction in activity during the 2012 calendar year. Lt. Kevin Hunter was the unit commander for the majority of that time until his promotion to Captain, at which time the unit was taken over by Capt. David Nelson. The case load was split mainly between the two investigators in the unit. Additionally, the Unit Commander and Investigators, along with the office Administrative Assistant,

coordinated, monitored and documented monthly drug tests. In all, 466 random drugs screens were administered.

<b>Three-Year Comparison of Formal Investigations</b>			
<b>Year</b>	<b>Internal</b>	<b>External (Includes Torts &amp; Lawsuits)</b>	<b>Total</b>
2012	84	101	<b>185</b>
2011	115	105	<b>220</b>
2010	88	106	<b>194</b>

<b>Three-Year Comparison of Complaints</b>			
<b>TYPE OF COMPLAINT</b>	<b>2012</b>	<b>2011</b>	<b>2010</b>
Internal	84	115	88
External	9	6	22
Tort Claims	45	49	53
Lawsuits	43	43	25
EEOC	4	7	6
<b>TOTALS</b>	<b>185</b>	<b>220</b>	<b>194</b>

<b>External Complaints by Race, Sex &amp; Category</b>								
	<b>MALE BLAC K</b>	<b>MALE WHIT E</b>	<b>MALE HISP</b>	<b>FEMAL E BLACK</b>	<b>FEMAL E WHITE</b>	<b>FEMAL E HISP</b>	<b>UN KNOWN</b>	<b>TOTAL S</b>
EEOC/MHRC COMPLAINT	3	0	0	0	1	0	0	<b>4</b>
EXCESSIVE FORCE	0	1	0	1	0	0	0	<b>2</b>
IMPROPER CONDUCT	3	0	0	0	1	0	0	<b>4</b>
INVESTIGATIVE NEGLIGENCE	0	0	0	0	1	0	0	<b>1</b>
LAWSUIT	24	9	1	4	8	0	2	<b>48</b>
OBEDIENCE TO DEPARTMENT POLICIES	0	1	0	0	1	0	0	<b>2</b>
TORT CLAIM FILED	12	15	2	6	8	0	6	<b>49</b>

Other	0	0	0	0	1	0	0	1
<b>TOTALS</b>	<b>42</b>	<b>26</b>	<b>3</b>	<b>11</b>	<b>21</b>	<b>0</b>	<b>8</b>	<b>111</b>

<b>THREE-YEAR USE OF FORCE COMPARISON</b>			
	<b>2012</b>	<b>2011</b>	<b>2010</b>
Suspect contacts	625*	629	574
<b>TYPE OF FORCE/NUMBER OF REPORTED APPLICATIONS</b>			
Physical Force	549	605	513
Chemical Agent	99	72	95
Impact Weapon	4	4	6
Aimed Firearm	213	224	177
CED/Taser	122	108	118
Other (K9/Beanbag )	9	14	4

\* The 625 suspect contacts represents 0.32% of the number of total calls for service in 2012, which was 194,648.

**Information Systems & Technology Unit:** For approximately eighteen years it has been the mission of ISTU to ensure the integrity of the data contained in the Spillman records management system. For nearly as long, ISTU has been responsible for the maintenance of the FWPD's fleet of in-car computers, the population of which currently exceeds 350 units.

In 2012, the Department obtained numerous mobile fingerprint scanners as part of an upgrade to the Automated Fingerprint Identification System. Working closely with the Department's vendor, ISTU staff assisted in testing the scanners, arranged for officer training with the devices, and began installing them in the vehicles.

2012 was the final year of the FWPD's occupancy of the E. Creighton Avenue location. ISTU was charged with safely moving several of the Department's computer systems, among them the digital photograph archive system and the digital dictation system.

ISTU staff completed the final phases of the shared City-County interview room recording system as the move to the Rousseau Centre progressed. Upon the project's completion, ISTU shifted its role from implementation to maintenance and training.

The Department tasked ISTU with assisting in the testing and refinement of a new product designed to limit the functioning



of any in-car computer input devices while the vehicle is in motion. The device was dubbed Archangel II and ISTU, in conjunction with the Radio Shop, installed the first wave of devices in December of 2012.

**Firearms Management:** The Firearms Evidence Section, formed under the Office of Professional Standards in 2006, is tasked with the storage, processing, testing and tracing of firearms evidence.

The annual fall destruction took place at Steel Dynamics, Inc. on November 30<sup>th</sup>, 2012 and 260 firearms were destroyed.

<b>CATEGORY</b>	<b>2011</b>	<b>2012</b>
TOTAL FIREARMS RECEIVED	533	600
N/W	116	106
N/E	81	124
S/W	81	100
S/E	249	250
ABOITE TWP.	6	20
FOUND FIREARMS	56	35
FIREARMS INVOLVED IN DOMESTIC DISTURBANCES	34	40
FIREARMS INVOLVED WITH NARCOTICS	55	55
FIREARMS RELEASED	128	181
FIREARMS DESTROYED	1106	514
FIREARMS GIVEN TO ISP/SBPD REFERENCE COLLECTION	5	1
FIREARMS IBIS TESTED	257	278
IBIS HITS	53	20

**Neighborhood Response Team (NRT):** The primary responsibility of the Neighborhood Response Team is to provide support to the four quadrant commanders with issues that cannot be resolved through a traditional uniform patrol. Most of these investigations deal with targeting career criminals. The duties of the team consist of, but are not limited to, surveillance, sting operations, dignitary protection, and long-term felony investigations.

<b>FELONY CHARGES</b>	<b>2012</b>	<b>2011</b>	<b>2010</b>
BURGLARY	2	0	11
THEFT/RECEIVING STOLEN PROPERTY	27	30	28
ARMED ROBBERY	0	2	0
AUTO THEFT/ATTEMPT	0	1	0
SERIOUS, VIOLENT FELON IN POSS. OF	0	3	0

FIREARM			
POSS. OF SAWED OFF SHOTGUN	0	1	0
POSS OF HANDGUN W/ OBLITERATED	0	1	0
CORRUPT BUSINESS INFLUENCE	17	10	7
FORGERY	2	5	0
POSSESSION OF STOLEN AUTO PARTS	0	4	0
PUBLIC INDECENCY	1	1	8
FRAUD	3	1	0
POSSESSION OF DEA SCHEDULE 1 CONTROLLED SUBSTANCE	2	1	0
ESCAPE	0	1	0
CRIMINAL MISCHIEF-D FELONY	1	1	3
RESISTING FLEEING - FELONY	2	2	0
OWI ENDANGERMENT	1	0	0
OWI FELONY	1	0	0
<b>TOTALS</b>	<b>62</b>	<b>64</b>	<b>57</b>
<b>MISDEMEANOR CHARGES</b>			
POSSESSION OF MARIJUANA	0	2	1
POSSESSION OF HANDGUN W/O LICENSE	0	3	0
RESISTING FLEEING-MISD.	2	4	0
RESISTING PHYSICAL	3	1	2
CRIMINAL TRESSPASS	0	7	2
PUBLIC INTOXICATION	1	2	2
MISC. ARREST WARRANTS	5	7	5
OWI	2	0	0
MINOR CONSUMING	2	0	0
LEAVING THE SCENE OF AN ACCIDENT	1	0	0
FALSE INFORMING	1	0	0
DRIVER NEVER LICENSED	1	0	0
<b>TOTALS</b>	<b>18</b>	<b>26</b>	<b>12</b>

# INVESTIGATIVE SUPPORT DIVISION



**Paul Shrawder, Deputy Chief  
Investigative Support Division**

The Investigative Support Division's overall responsibilities concern providing investigative and support services to the Police Department and the community of Fort Wayne. Generally, this is achieved through using various personnel and technology to conduct investigations into felony criminal incidents that occur within the jurisdiction of Fort Wayne. These investigative areas include Homicide, Robbery, Vice & Narcotics, Physical and Sexual Assaults, Domestic Violence, Burglary, Theft, and Juvenile Crimes. The goal, then, is to gather sufficient facts through the process of interviews and evidence collection to identify a suspect(s) who committed the crime and then provide the results of those investigations to the Allen County Prosecutor or the Federal Prosecutor for determination on charging the suspect(s).

Most police services evident to the community appear as a visible response to emergencies and media coverage of events usually marked by police cars, sirens, lights, etc. This is what most outside of law enforcement envision when a crime or incident occurs. It is the primary role of the police to respond to emergencies and keep the peace, yet there is much more involved in an incident after that first response. This is where the role of the Investigative Support Division comes into play. While not so visible to the public, the Investigative Support Division maintains a vital role in our community and justice system.

In addition to conducting felony investigations, the Investigative Support Division maintains support services to assist in these investigations and provide services in such areas as; Crime scene technicians, property and evidence storage room, laboratory services, victims assistance services, crime analysis services and supporting the Crime Stoppers program. To assist in accomplishing these goals, the Investigative Support Division maintains cooperative relationships with a variety of area Agencies that serve the

community. The Investigative Support Division personnel work closely with members of other Law Enforcement Agencies such as the Allen County Sherriff's Department, New Haven Police Department and Indiana State Police and other area Police Agencies. The Investigative Support Division also provides personnel in partnership with area Federal Law Enforcement including the FBI, ATF and DEA, as well as work closely with other Agencies such as the U.S. Marshall Service, U.S. Postal Authority and Secret Service. Additionally, we collaborate with other community services such as Dr. Bill Lewis Child Advocacy Center, Fort Wayne Sexual Assault Treatment Center, Department of Child Services, Adult Protection Services and many more.

**Investigative Division:** Often called the Detective Bureau, this section consists of sworn personnel who investigate felony incidents that occur within the City of Fort Wayne and may on occasion be asked to assist outside agencies with their investigations. Sections of the Detective Bureau include; Robbery/Homicide, Crimes Against Persons (Sex Crimes), Property Crimes, Financial Crimes, Domestic Violence Unit, Juvenile Crimes Unit, B-Shift and C-Shift Detectives.

**Homicide:** In 2012, the Fort Wayne Police Department Homicide Division investigated 25 homicides. In totality, the Allen County Coroner's office reported 30 homicides in the City, however; two involved individuals who had been shot in previous years, two occurred outside of the City limits, and one was investigated by the State Police.

Homicide Statistics:

2012: 25  
2011: 20  
2010: 28  
2009: 22  
2008: 24

Of the 25 cases investigated in 2012:

Justifiable homicide	4
Murder/Suicide	1
Intentional homicides	20
Male	23
Female	2

Method:

Gun	20
Knife	2
Blunt force	3

Race:

African-American	17
Caucasian	5
Hispanic	2

**Robbery:** The detectives in the Robbery Section work not only robberies, but also conduct follow-up investigations on non-critical shootings. In addition to these responsibilities, robbery detectives serve on homicide teams and the Northeast Indiana Bank Robbery Task Force.

The following is a breakdown of the 439 robberies (increase of 44%) investigated by the FWPD in 2012:

	<u>2010</u>	<u>2011</u>	<u>2012</u>
Firearm	187	188	296
Strong-arm	91	92	108
Knife	31	26	28
Other	11	9	7

Of significance were 16 bank robberies compared to 5 in 2011, and 22 pharmacy robberies.

**Crimes Against Persons:** The Crimes Against Persons (Sex Crimes) section of the Investigative Support Division is primarily responsible for investigating reports of felony assaults committed by adults with the exception of Domestic Battery, Homicide and Robberies. The majority of these types of cases are sexual assaults.

Following is a list of the type of crimes investigated in this section:

Sexual Deviate Conduct	Criminal Recklessness
Abuse of the Elderly	Rape / Attempted
Felony Assault	Criminal Confinement
Resisting Law Enforcement	Sexual Battery
Felony Intimidation	Sexual Misconduct
Child Abuse	Stalking
Child Neglect	Kidnapping
Internet Predator/Child Pornography	

<b>Statistics:</b>	<b><u>2010</u></b>	<b><u>2011</u></b>	<b><u>2012</u></b>
Cases	364	332	547
Warrants	119	119	135
Prosecutor 48-hour cases	68	51	91

**Domestic Violence Unit:** The Domestic Violence Unit consists of five detectives (two of whom are funded by a grant), and the supervising Sergeant. The unit is responsible for felony intimate party relationship cases per the grant and excludes those cases involving any type of sex crime. The unit has a large caseload due to domestic violence being one of the highest calls for service for any Police Department.

Cases worked are often difficult due to a high level of victim recanting, no witnesses or witnesses too young to be interviewed and lack of physical evidence. There is daily contact with prosecutors and other agencies as these cases move through the system. Unit personnel attend several committees such as the Mayors Task Force on Violence Against Women, Multi-Cultural Committee, the Hispanic Cultural Council, and the Forensic Advocacy Center for Elder Abuse (FACE), Intimate Partner Violence Abuse Board (IPVA) and the Indiana Coalition Against Domestic Violence (ICADV) in Indianapolis.

Unit members provided training to multiple agencies on protective order enforcement.

<b>Statistics:</b>	<b><u>2010</u></b>	<b><u>2011</u></b>	<b><u>2012</u></b>
Investigations	301	470	357

**Street Crimes Unit:** The Street Crimes Unit's, (created in 2008) primary role is to track the residential burglaries occurring throughout the City and attempt to identify

patterns, repeat offenders and suspects. The Unit conducts thorough investigations until an arrest or all leads are exhausted. The caseload is kept at a reasonable level to commit the time needed for these investigations. The Street Crimes Unit has four detectives and one sergeant. The Unit has also investigated other criminal activity such as business burglaries, theft, fraud, forgery, battery and robbery.

<b>Statistics:</b>	<b><u>2010</u></b>	<b><u>2011</u></b>	<b><u>2012</u></b>
Cases	334	256	298
Arrests	92	75	50
Warrants requested	26	21	35

There were 1817 residential burglaries in Fort Wayne in 2012 compared to 1670 in 2011, an increase of 9%. Of the 1817, 218 were copper and scrap-related.

**Property Crimes Unit:**

This Unit is responsible for investigating felony property crimes such as burglary, felony theft, employee theft and possession of stolen property.

<b>Statistics:</b>	<b><u>2011</u></b>	<b><u>2012</u></b>
Burglary Cases	1884	2035
Theft Cases	5790	7335
Warrants requested	27	53

**Auto Theft Unit:** Besides investigating auto thefts, this Unit works extensively with the BMV and the police Records Bureau correcting titling and reporting errors. They also work with the Indiana Attorney General's Office to police auto dealerships, conduct salvage, fleet and custom vehicle inspections and V.I.N. checks. Two full time and one part-time detectives staff this unit.

<b>Statistics:</b>	<b><u>2010</u></b>	<b><u>2011</u></b>	<b><u>2012</u></b>
Stolen vehicles	405	492	533
Stolen vehicle recoveries	343	413	450
Adult Arrests	54	48	60
Juvenile Arrests	12	9	23

**Pawn/Stolen Unit:** The Pawn Detail is a part of the Property Crimes Section and has one full time assigned Detective and one part-time. The responsibilities of this area include the recovery of stolen property at pawnshops and jewelry stores that purchase items from the general public and are subject to City Ordinance 115. The Pawn Detail frequently works with outside agencies to recover stolen property and to apprehend suspects.

Pawn investigations help eliminate some of the background work for follow-up Detectives; this allows for a faster follow-up and subsequent submission of casework to the Prosecutor's Office. In 2012, the Pawn detail recovered property worth approximately \$67,785.

**Juvenile Aid Division:** The Juvenile Aid Division is responsible for investigating crimes which involve individuals 17 years of age and younger. JAD is also responsible for the monitoring of juvenile runaways/missing persons and custodial interference investigations. Detectives are broken down into four separate areas consisting of property crimes, schools liaison, sex crimes and missing persons. JAD is currently staffed with six detectives.

<b>Statistics:</b>	<u><b>2011</b></u>	<u><b>2012</b></u>
Cases Assigned	415	399
Warrants	113	130
Missing Persons (Assigned)	1,039	984
Cases Reviewed	2,968	2,624
Juveniles Fingerprinted	51	59

**Financial Crimes:** The Financial Crimes Unit investigates the following types of felony crimes: Insufficient funds checks over \$2,500, counterfeit checks, forged stolen checks, other forged documents, credit card fraud, fraud on financial institutions, identity theft, insurance fraud, utility fraud, counterfeit currency, and a variety of other frauds. In 2012, 1,402 cases were closed as compared to 677 in 2011.

**Digital Forensics Unit:** This Unit examines computers, cell phones and digital surveillance systems, along with other types of electronic media. This area has grown



exponentially over the last few years. There are two full time and one part-time supervisor.

<b>Statistics:</b>	<b><u>2011</u></b>	<b><u>2012</u></b>
Computers examined	8	35
Cell phones examined	64	127
CD/DVD		164

**B-Shift Investigative Section:** The B-Shift Section of the Investigative Support Division is responsible for conducting investigations into felony crimes occurring during the late afternoon and evening hours. When such incidents involve suspect apprehensions, those detectives complete and compile the necessary paperwork required for the appropriate felony charges. B-Shift Detectives also conduct follow-up investigations on most cases assigned to them, depending on the nature of the crime involved. This section consists of 11 Detectives and two Sergeants.

<b>Statistics:</b>	<b><u>2011</u></b>	<b><u>2012</u></b>
Cases assigned	622	686
Warrant requests	76	66

**C-Shift Investigative Section:** The C-Shift Section of the Investigative Support Division is responsible for conducting preliminary investigations into felony crimes occurring during the late night and early morning hours. When such incidents involve suspect apprehensions, those detectives complete and compile the necessary paperwork required for the appropriate felony charges. This section consists of six Detectives and one Sergeant

<b>Statistics:</b>	<b><u>2011</u></b>	<b><u>2012</u></b>
Cases assigned	509	561

**Crime Stoppers:** Crime Stoppers, established in 1983, is responsible for taking anonymous tips on criminal incidents and wanted suspects and providing that information to various law enforcement agencies. Crime Stoppers is governed by civilian personnel and community business representatives, but consults with representatives of area

law enforcement. The office is staffed with one civilian director.

**10-Year Statistics:**

Tips Received	14,763
Arrests	6,910
Felony Charges	8,387
Misdemeanor Charges	9,559

**Crime Analysis Unit:** The Crime Analysis Unit personnel read all felony reports for data accuracy and forward all crime patterns and trends to the Investigative Support Division Section Commander and/or to the Operations Command staff. The information is distributed using electronic mail, messaging and crime maps.

After quality control duties are completed for the current month, the statistical information is compiled and forwarded to the FBI-UCR using their summary based format system of reporting.

The Crime Analysis Unit also supplies crime statistics, crime data, crime maps, and other related information to the ISD Street Crimes Unit, the Neighborhood Response Team, the Crime Prevention Unit, and to the Public Information Office.

Additionally, the unit provides yearly crime data to the local colleges and universities so they can meet their Federal Government requirements.

**Victim Assistance:** For the past 30 years, the Victim Assistance program has proudly served the citizens of Fort Wayne. The program works collaboratively with: Area law enforcement, schools, hospitals, community agencies and various faith communities on a local, state and national level to provide comprehensive services.

The ultimate goal of the ten victim advocates and five volunteers is to address crime victim needs in a timely, compassionate manner in the aftermath of crime by removing barriers to service wherever possible, providing support, information and referral.

TYPE OF CRIME	2011	2012
Child Abuse	94	110
Molest	361	451
Homicide	20	30
Domestic	3114	2912
Sexual Assault	137	148
Robbery	198	249
Assault	154	173
Other *	404	403
<b>TOTALS</b>	<b>4482</b>	<b>4476</b>

\* Suicide, threats, stalking, arson, fraud, property, elder abuse

**Laboratory Services:** The Fort Wayne Police Department Laboratory is maintained by three civilian employees. These include the Laboratory Manager/AFIS Manager and two Forensic Scientists/Technicians. The Laboratory has the responsibility for conducting forensic examinations on evidence collected and submitted from various crime scenes including, but not limited to: Latent fingerprint and palm print evidence, footwear, tire track, postmortem fingerprints and other physical comparison for the purpose of supporting the Police Department in criminal investigations. The Laboratory is also responsible for officer and civilian training in various forensic disciplines (fingerprints, photography, footwear, etc.) as well as operation, training and maintenance of the county-wide Automated Fingerprint Identification System (AFIS).

#### PERFORMANCE INDICATORS

	<u>2011</u>	<u>2012</u>	<u>CHANGE</u>
Requests for Service	1264	1360	+ 8 %
Reports Generated	922	1002	+ 9 %

#### REQUESTS FOR LABORATORY SERVICE

	<u>2011</u>	<u>2012</u>	<u>CHANGE</u>
Crime Scene Management	85	104	+22 %
Detective Bureau	116	154	+33 %
Operations Division	711	750	+ 5 %
Vice / Narcotics	29	27	- 7 %

Bureau of Identification	141	118	-19 %
Record Certifications	23	26	+13 %
Miscellaneous *	<u>159</u>	<u>181</u>	+14 %
Totals	1264	1360	+ 8 %

\* Miscellaneous includes outside agency cases, court, training, additional suspect exams, etc.)

Juveniles Printed for felonies 51 59 +16 %



**Crime Scene Management:** The Crime Scene Management section of the Investigative Support Division strives to have individuals trained in the latest methods of documentation, preservation and collection of evidentiary items. The Unit consists of two Supervisors and nine technicians, all sworn personnel.

**FORENSIC INVESTIGATIONS**

**OFFICER RESPONSES**

	2011	2012
HOMICIDE	61	79
SUICIDE	30	46
CRIME SCENES ATTENDED	348	426
CRIME SCENES PHOTOGRAPHED	197	261
CRIME SCENES VIDEOTAPED	31	30
LATENT PRINT PROCESSING	250	103
COLLECTED ITEMS FOR PRINTING	231	221
COLLECTED DNA EVIDENCE	132	118
COLLECTED FIREARMS EVIDENCE	58	103
AUTOPSIES PHOTOGRAPHED	31	40
CASES SUBMITTED TO STATE POLICE LAB	177	233
CASES SUBMITTED TO FWPD LAB	92	105

**Property/Evidence:** The Property and Evidence Department is responsible for maintaining the integrity, continuity and

records for evidence turned in. Cases are held for investigative purposes, held for court, held for owner or if unclaimed, purged or auctioned. The Unit receives additional assistance from officers placed on "light duty" while they await return to full service. This Department is staffed with one Evidence Manager, three full time Evidence Specialists, one part time Evidence Assistant and one full time officer in charge of firearm evidence.

The Unit conducted the annual auction of found bicycles, with the help of several police officers, netting the Department \$12,610.

**Vice & Narcotics Bureau:** The Fort Wayne Police Department Vice & Narcotics Bureau is committed to enhancing the quality of life in Fort Wayne through the investigation of narcotics-related activities. This commitment is facilitated by creating an open dialogue with the internal and external stakeholders germane to the Fort Wayne Police Department; by understanding their needs, and directing our resources and efforts accordingly.

The Bureau focused on three major areas in 2012: Methamphetamine production, multiple long-term investigations, and drug tips.

<b>Statistics:</b>	<b><u>2011</u></b>	<b><u>2012</u></b>
Overall arrests	1,809	1,197
Drug Buys	408	418
Weight-Confiscated Drugs (grams)	89,255	100,830

**Drug House Ordinance:**

<b>Statistics:</b>	<b><u>2011</u></b>	<b><u>2012</u></b>
Tips Received	948	965
Drug Houses Closed	67	72

# NORTHWEST DIVISION

The Northwest Division is providing police service to approximately 61,717 citizens out of the approximately 254,397 who live inside the incorporated areas of Fort Wayne. Northwest officers are responsible for providing police service to 33.07 square miles out of the City's total of 110.36 square miles.

The Northwest Division posted a 4% overall reduction in crime from the previous year, despite the continuing poor economy. Larcenies and burglaries were both down from 2011. The Northwest officers are very effective at spotting patterns, collecting surveillance tapes and information sharing, and some noteworthy arrests were made this year.



Communication with the citizens was a priority, as well as more emphasis on evidence collection.

**Martin A. Bender**  
**Deputy Chief**  
**Northwest Division**

<b>Statistics:</b>	<b><u>2011</u></b>	<b><u>2012</u></b>
Homicide	5	5
Rape	18	13
Robbery	81	82
Aggravated Assault	54	60
Burglary	415	367
Larceny	2103	2040
Vehicle Theft	74	100
Arson	6	7

**Traffic Overview:**

There were 16 fatal accidents in the City as compared to ten in 2011. (16 crashes with 18 fatalities.) There were 8,790 collisions, an increase of 47 from 2011.

In 2012, there were 1346 people tested for blood alcohol levels in the Allen County Confinement Center, the central location for BAC DATAMASTER. Of that number, 1336 were charged in relation to the initial investigation, a small increase from 2011.

The average Blood Alcohol Content (BAC) of those drivers arrested in Fort Wayne for Operating While Intoxicated (OWI) is .143%, which is .01 lower than the average result in 2011.

Speed and seat belt enforcement is an on-going enforcement project and DUI Taskforce officers work every Friday and Saturday night along with other selected enforcement dates.

**F.A.C.T. Team:** The Fort Wayne/Allen County Crash Team (FACT) was begun on June 1, 2006. The team consists of officers from the Fort Wayne, Allen County and New Haven Police Departments. These officers, who volunteer to serve on this team, are specially trained to investigate serious injury and fatal crashes throughout Allen County. Grant assistance is obtained from the Governors Council on Impaired & Dangerous Driving. Current strength is five, five-officer teams.

The Team responded to 34 serious bodily injury or fatal crashes in 2012, up from 23 in 2011. Alcohol and/or drugs were a factor in 6 or 17% of the crashes.

**Hit-Skip Section:** During 2012, the Hit-Skip Section, which is staffed by four Detectives, processed 2017 Hit-Skip crashes, an increase from 2011. Of these crashes, 471 were cleared by an investigating officer, 1291 were closed due to lack of evidence or no witnesses able to identify a driver.

**Traffic Safety Grants:** All grants were awarded to the Department by the "Governor's Council on Impaired and Dangerous Driving" through the Indiana Criminal Justice Institute (ICJI). In 2012, the Department was granted \$429,500.00 to be dispersed to agencies within the Allen

County Traffic Safety Partnership. The grants were made up of the following:

FACT - \$ 5,000.00  
 DUI - \$200,000.00  
 DDE - \$ 23,000.00  
 BCC - \$201,500.00

**Charges :**

SEAT BELT	5655
CHILD RESTRAINT	102
SPEEDING	2783
OPEN CONTAINER VIOLATION	13
MINOR CONSUMING	31
MISDMEANOR OWI	153
FELONY OWI	23
SUSPENDED LICENSE	328
OTHER LICENSE VIOL.	129
CRIMINAL MISDEMEANOR	83
CRIMINAL FELONY	25
OTHER TRAFFIC CITATIONS	1030
TOTAL	10355

**DUI TASK FORCE (IMPAIRED DRIVING)**

**Charges :**

SEAT BELT	32
CHILD RESTRAINT	14
SPEEDING	933
OPEN CONTAINER VIOLATION	41
MINOR CONSUMING	95
MISDMEANOR OWI	642
FELONY OWI	126
SUSPENDED LICENSE	347



OTHER LICENSE VIOL.	143
CRIMINAL MISDEMEANOR	181
CRIMINAL FELONY	36
OTHER TRAFFIC CITATIONS	2022
TOTAL	4531

**5-YEAR CRASH COMPARISON**

	2008	2009	2010	2011	2012
PROPERTY DAMAGE	9241	8642	8660	8763	8790
PERSONAL INJURY	1599	1535	1633	1670	1702
HIT-SKIP	2450	1824	1814	1934	2017
FATALS	14	17	10	9	16

**5-YEAR OWI ARREST COMPARISON**

	2008	2009	2010	2011	2012
TOTAL	1654	1316	1312	2234	2103

**Emergency Services Team (EST):** The EST exists to provide the City with the ability to successfully resolve extraordinary and volatile incidents, with as little loss of life and property as possible. Some of the situations responded to are: Hostage situations, sniper situations, barricaded/suicidal subjects, high-risk warrant service and high-risk stakeout details.

	2010	2011	2012
Events	67	67	77
Hostage Situations	2	2	3
Barricaded Subjects	2	2	7
High-Risk Warrant Service	62	62	58
Other	1	1	2

**Crisis Response Team (C.R.T.):** The Crisis Response Team was formed to respond to hostage, barricade situations, or suicidal incidents, which might require the use of negotiators. The ultimate goal of the Team is to peacefully resolve all calls that they respond to, minimizing injury to officers, victims and suspects involved. The Team consists of 11 officers and works hand-in-hand with the Emergency Services Team, and continues to train together on the two regularly scheduled scenarios.

**Crisis Response Team Calls for Service**

2008	10
2009	10
2010	5
2011	8
2012	16

**Hazardous Device Unit - Bomb Squad:** A Homeland Security grant of \$10,000 was obtained and much appreciated. With the move of the Department from Creighton Avenue, a building was secured to store the vehicles and equipment. Safety has always been the number one goal and in 2012 there were zero injuries.

**Statistics:**

Arrests	4	Bottle Bombs	6
Calls for Service	140	Pipe Bombs	2
Federal Warrants	2	Sparkler Bombs	4
Mailbox Bombs	2	Fireworks/Small	
Demonstrations	9	Arms	1210 lbs.
Suspicious Packages	21		
Recovered Explosives	36		

# NORTHEAST DIVISION



**James Feasel**  
**Deputy Chief**  
**Northeast Division**

In August, the Northeast Division had a change in command with Deputy Chief James Feasel replacing Deputy Chief Garry Hamilton, who took over the Southeast Division. The area remains at approximately 30 square miles and officers and supervisors responded to 34,771 calls for service, which was an increase of 3.7% over 2011. The total number of reported Part 1 crimes for the Northeast Division during the year 2012, was 1,879, an increase of 15.9%. There was a 14.8% decrease in aggravated assault. In spite of the increase in crime overall and current economic challenges, the Northeast Division continues to maintain the lowest number of reported crimes of any other Division within the City.

<b>CRIME</b>	<b>2012</b>	<b>2011</b>	<b>2010</b>	<b>CHANGE from 2011 to 2012</b>
Homicide	1	0	2	+100%
Rape	25	15	12	67%
Robbery	64	46	55	+39%
Agg. Assault	52	61	37	-15%
Burglary	299	239	308	+25%
Larceny	1375	1205	1233	+14%
Vehicle Theft	57	49	45	+16%
Arson	6	6	4	0%
<b>TOTALS</b>	1879	1621	1694	+16%

Drug House Closures	10	5	6	+100%
NLO Contacts*	1515	1714	1328	-12%
Traffic Stops	3720	4872	4168	-24%

\* Neighborhood Liaison Officer Contacts

**Police Athletic League (PAL):** Activities for 2012: Most of the PAL programs have remained strong. The fundraising for golf was again lower for the year. Sponsorship of the football teams remains strong and the volunteer staff remains intact. The partnership with the Allen County Juvenile Center to provide community service opportunities has proven rewarding.

Program	Enrollment	Staff
AAU Basketball	155	21
Coed Basketball	76	14
Baseball	579	96
Open Gym	407	9
Football	635	127
Student Self-Defense	148	11
Cheerleading	116	4
Hip-Hop Dance	59	2
Tennis	21	11
Totals	2,196	395

**Honor Guard:** The Guard was very active in 2012, attending training, parades, special events and funeral details of both active and retired officers totaling 21 commitments. Their professionalism and dedication is much appreciated by the citizens of Fort Wayne.

**Pipe & Drum Brigade:** The Brigade completed 17 commitments in this, it's eighth year. It was called upon to perform at local schools, churches, retired officers' funerals and bring our fallen brothers and sisters to rest for line-of-duty death funerals. The community has expressed its appreciation over the years and the positive image it portrays.

# SOUTHWEST DIVISION

The Southwest Division serves a population of over 63,000 citizens within a 35-square mile area. During 2012 the Southwest Division patrol officers and supervisors responded to 44,398 calls for service which equated to 23% of the calls for the agency, a slight decrease from the 46,949 in 2011.



**Stephen Reed**  
**Deputy Chief**  
**Southwest Division**

The number of total reported Part 1 crimes for the Southwest Division during the year 2012 was 2,409 which represents 23% of the 10,503 Part 1 crimes reported for the city. This is an increase of 2.47% over 2011. The largest increase was robberies at 54% over 2011. The largest decrease was in homicides, down from six to four.

The Southwest Division command attended the monthly Southwest Area Partnership meetings in an effort to address the concerns of the quadrant. Along with the Partnership, personnel maintain relationships with Lutheran and St. Joseph Hospital security and Fort Wayne International Airport Police to prevent and solve crime.

<b>CRIME</b>	<b>2012</b>	<b>2011</b>	<b>2010</b>	<b>% Change from 2011</b>
Homicide	4	6	3	-33%
Rape	15	19	12	-21%
Robbery	91	59	80	+54%
Aggravated Assault	52	70	66	-26%
Burglary	510	503	593	+1%
Larceny	1610	1588	1468	+1%
Veh Theft	115	93	73	+24%
Arson	12	13	9	-8%
<b>TOTAL</b>	<b>2409</b>	<b>2351</b>	<b>2304</b>	<b>+2.47%</b>

<b>Misc Indicators</b>	<b>2012</b>	<b>2011</b>	<b>2010</b>
Drug House Closures	27	22	20
NLO Contacts	1821	2048	1154
Traffic Stops	5276	8457	7386

**Hispanic/Multicultural Liaison Officer:** The Department maintains an office dedicated to the sensitive issues and concerns with emerging populations in regard to public safety. The Liaison Officer has developed, implemented and participated in initiatives to build positive relationships between multicultural communities and police. The HMLO strives to overcome barriers in culturally and linguistically diverse populations by providing cross-cultural education between police/city government and communities and promotes the reporting of crimes to build safer and stronger communities.

- Service delivery to emerging populations in various settings
- Collaboration with community/mental health/cultural organizations
- Police/City/Community Resource/referrals for target communities
- Institute bilingual FWPD Liaison Mobile Office at various locations to achieve maximum impact/involvement: Center for Nonviolence currently with a majority of the focus on case management/advocacy for victims of domestic violence
- Liaise with local, state, regional and national organizations that are involved in impactful multicultural issues/initiatives
- Network/support initiatives at the Fort Wayne Rescue Mission with the focus on poverty, mental health and homelessness
- Respond to calls for assistance to aid agencies achieve specific goals

<b>SOUTHEAST DIVISION</b>
---------------------------

The Division is staffed by approximately 80 officers assigned to Uniform Patrol, Gang Unit and Crime Prevention. The officers provide police service to the citizens of Fort Wayne living and working in the Southeast quadrant. The Southeast Division is commanded by Deputy Chief Garry Hamilton and Captain William Corn.



**Garry Hamilton**  
**Deputy Chief**  
**Southeast Division**

The Southeast Division is providing service for approximately 17.5 square miles. During 2012, the Southeast Division patrol officers and supervisors responded to 62,136 calls for service, which was 3,667 fewer calls than in 2011, for a decrease of 5.6% calls for service.

Even though the Southeast Quadrant showed a decrease in the total number of calls for service for 2012, the calls for service in Southeast Quadrant remained the highest of all other quadrants.

As a whole, the City of Fort Wayne experienced a total of 10,503 Part 1 crimes during 2012, an increase 6.56%. Listed below is a breakdown by quadrant of the number of crimes which occurred in each area:

<b>DIVISION</b>	<b>TOTAL 2011</b>	<b>TOTAL 2012</b>	<b>% CHANGE</b>
Northwest	2,785	2,674	-3.99%
Northeast	1,621	1,879	15.92%
Southwest	2,351	2,409	2.04%
Southeast	2,899	3,331	14.90%

**Southeast Part 1 Crime 2011 and 2012:**

The number of Part 1 Crimes occurring in the Southeast Division increased 14.90% during 2012. The following table compares Southeast Part 1 crimes in 2011 to those that occurred during 2012. The percentage change in each category is also noted.

<b>CRIME</b>	<b>2011</b>	<b>2012</b>	<b>% CHANGE</b>
Homicide	7	12	71.42%
Rape	26	31	19.23%
Robbery	120	205	70.83%
Aggr. Assault	156	196	25.64%
Burglary	731	849	16.14%
Larceny	1,710	1,864	9.00%
Vehicle Theft	133	142	6.76%

